

# DAILY DART

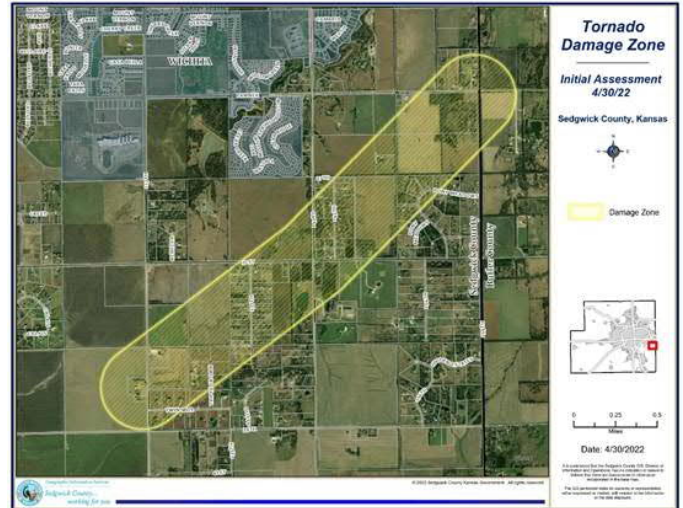
WSP USA INSPECTION SERVICES DISASTER AWARENESS REPORT

May 2, 2022

## Tornado Activity

### Kansas

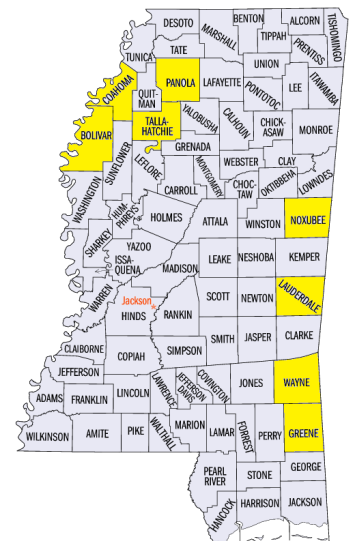
- At least four people were injured, and hundreds of buildings damaged after two tornadoes hit the Wichita, Kansas, area Friday evening, officials said.
- The storm damaged or destroyed around 100 structures in Sedgwick County with close to 1,000 homes and buildings damaged or destroyed in Andover.
- In a news conference early Saturday afternoon, authorities said they expect that number to grow as they wrap up an official damage assessment.
- On Saturday afternoon the National Weather Service said its preliminary assessment of a reported tornado in Butler County measured it at EF 3, meaning that it generated winds between 158 and 206 mph.
- The vortex ripped through terrain from eastern Sedgwick County to Andover in Butler County and toward Benton for 21 minutes starting at 8:10 p.m., the service said in a public information statement.
- A second tornado near Rosalia, east of Wichita, was rated as an EF 1 with peak winds estimated at 100 mph.
- The storm followed a 7.8-mile path and was on the ground from 9:05 p.m. to 9:24 p.m., the weather service said.
- Governor Laura Kelly declared a State of Disaster Emergency on Friday evening.



## Declaration Request

### Mississippi

- Governor Tate Reeves has requested a Major Disaster Declaration from President Biden for Individual Assistance due to tornadoes and severe weather which occurred on March 30, 2022.
- According to the National Weather Service, 33 tornadoes swept through the state that day causing major damage to homes and injuring three people.
- The State is requesting Individual Assistance for the following eight counties: Bolivar, Coahoma, Greene, Lauderdale, Noxubee, Panola, Tallahatchie and Wayne.
- Validated numbers show in those eight counties there were: 85 homes destroyed or with major damage, estimating over a million dollars in property damage.



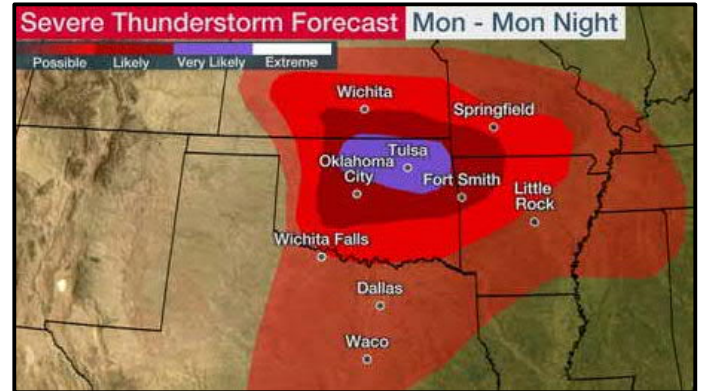
# DAILY DART

WSP USA INSPECTION SERVICES DISASTER AWARENESS REPORT

May 2, 2022

## Severe Weather Outlook

- Multiple rounds of severe thunderstorms and heavy rain will hit parts of the Plains, Midwest and South well into the week ahead as a parade of disturbances continue to track into the central U.S.
- The storms this week could pack tornadoes, some possibly strong, as well as destructive straight-line winds, large hail and flashing flooding.
- A disturbance spreading across the Southern Plains will likely go on to produce severe storms in parts of Oklahoma, North Texas, southern Kansas, southern Missouri and northern Arkansas on Monday.
- Tornadoes, large hail and wind damage could all be threats in these areas. Some tornadoes could be strong (EF2+ intensity) and hail two inches or larger in diameter is possible.
- Heavy rain could also trigger flash flooding in many of the same areas at risk for severe weather.



## Wildfire Activity

### New Mexico – Calf Canyon & Hermits Peak Fire

- The Calf Canyon and Hermits Peak fire is currently the largest fire burning in the country.
- The fire surpassed 116,000 acres, and the incident commander says the fire could end up doubling in size.
- The state's largest wildfire has destroyed more than 200 structures, including homes, in areas northwest of Las Vegas, N.M.
- The Hermits Peak and Calf Canyon Fire tore through areas in San Miguel and Mora counties after the two wildfires merged into an enormous blaze late last week, wreaking widespread damage on communities and forcing thousands of people to evacuate.
- All of Mora is now under mandatory evacuations, those leaving must take Highways 433, 442 or 518 north to Taos. Those roads will be open for evacuation only and no re-entry will be allowed.
- The fire is at 30% containment.

## Joint Preliminary Damage Assessments

State	Event	Number of Counties for IA		Start-End
		Requested	Completed	
TN	Severe Weather & Wildfires March 30-31	1	0	4/27-TBD

# DAILY DART

WSP USA INSPECTION SERVICES DISASTER AWARENESS REPORT

May 2, 2022

## Pending Individual Assistance Declaration Request

State	Event	Date Submitted	Approved/Denied /Pending	Number of Counties/Tribes
MS	Severe Storms, Straight-Line Winds & Tornadoes March 22, 2022	4/28/2022	Pending	4 Counties
MS	Severe Storms, Straight-Line Winds & Tornadoes March 30, 2022	4/29/2022	Pending	8 Counties

## WSP USA Inspection Services Active Disasters

Disaster Number and State	Disaster Type	Number of Counties Declared	Days Since Launch	Registration Deadline
4611 LA	Hurricane	25 Parishes	244	11/29/2021

## WSP USA INSPECTION SERVICES ACTIVITY

