

DAILY DART

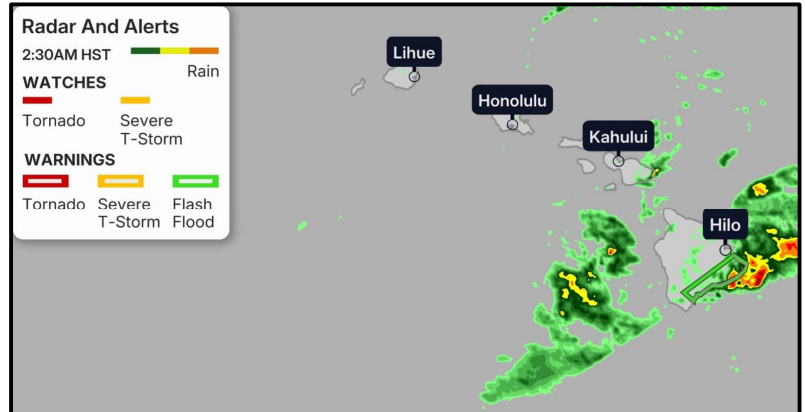
WSP USA INSPECTION SERVICES DISASTER AWARENESS REPORT

April 8, 2026

Potential Flood Risk

Hawaii

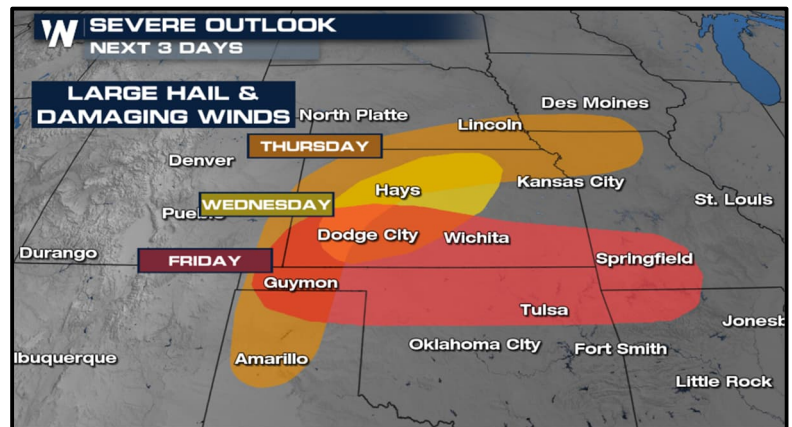
- The first round of heavy rainfall has moved to hit the more eastern islands of the state.
- The heaviest rainfall has been reported across the eastern side of the Big Island, where flash flood warnings are still in place.
- Rainfall over the last 24 hours has widely been between 2-6 inches for the island, with isolated totals topping 6 inches. Heavy rainbands are producing strong rainfall rates, which could lead to more flash flooding. Rainfall is expected to surge across the entire island Wednesday to Friday.
- Rainfall totals are expected to be highest across The Big Island and Kauai, where storm totals up to 8 inches are possible. However, across higher elevations, rainfall could exceed a foot.
- Winds could blow between 40 and 50 mph, with gusts to 60 mph possible across the lee side of the mountains on the islands of Kauai and Oahu.



Severe Weather Outlook

Plains

- A potent spring storm system is building across the central United States, setting the stage for several days of dangerous weather from the Plains to the Midwest.
- Strong winds are already impacting parts of the Northern Plains and Rockies, with some areas seeing powerful gusts that could intensify even further as the system strengthens.
- Wind alerts cover quite a bit of real estate in Montana, where winds could gust as high as 90 mph in the highest elevations.
- As this storm moves east, it is expected to trigger multiple rounds of thunderstorms.
- A developing low-pressure system in southern Canada is helping push a cold front into the Plains, creating an environment for storms to form and repeatedly track over the same areas.
- The flood threat will likely focus on portions of Kansas, Missouri, and surrounding states, where repeated downpours could lead to flooding issues.
- Rainfall totals are expected to reach a few inches in some areas, with locally higher amounts possible where storms repeatedly pass over the same locations.



DAILY DART

WSP USA INSPECTION SERVICES DISASTER AWARENESS REPORT

April 8, 2026

Pending Individual Assistance Declaration Requests

State	Event	Date Submitted	Approved/Denied/ Pending	Number of Counties/Tribes
IL*	Severe Storms and Flooding July 25 - 28, 2025 (Appeal)	11/21/2025	Pending	3 Counties
WA	Severe Storms, Straight-line Winds, Flooding, Landslides/Mudslides. Dec 5-22, 2025	1/21/2026	Pending	10 Counties
HI	Severe Storms, Flooding, Land- slides/Mudslides March 10 & continuing	3/23/2026	Pending	4 Counties
MI	Severe Storm & Tornadoes March 6, 2026	4/1/2026	Pending	3 Counties

*Award of task order to contractor pending

WSP USA Inspection Services Active Disasters

Disaster Number and State	Disaster Type	Number of Counties Declared	Days Since Launch	Registration Deadline
	N/A			

WSP USA INSPECTION SERVICES ACTIVITY

