

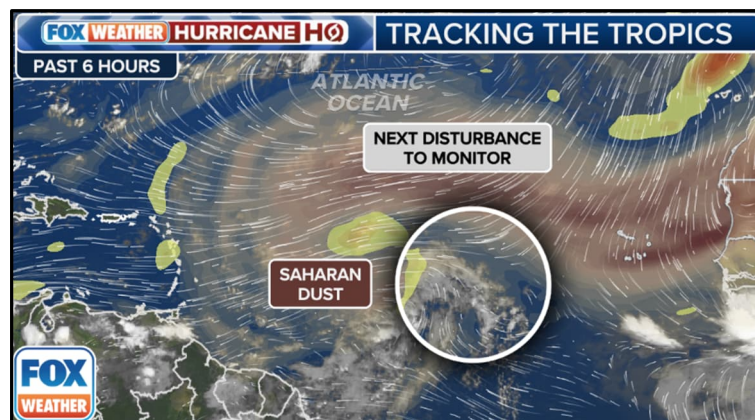
DAILY DART

WSP USA INSPECTION SERVICES DISASTER AWARENESS REPORT

July 31, 2025

Tropical Activity Atlantic

- Some computer forecast models are showing signs that the Atlantic Basin's Main Development Region between Africa and the Caribbean islands may be starting to see an uptick in tropical activity as we enter into August.
- Nothing is immediately concerning or imminent when it comes to tropical development, it appears that the atmospheric conditions that have been hostile so far are showing inklings of gradually becoming more favorable.
- A tropical wave is moving through the Main Development Region, but it isn't a threat at this time.
- Two in particular that look impressive have started their journey into the eastern Atlantic and the heart of the Main Development Region.
- The atmosphere hasn't yet shed its tropical Kryptonite, and the clusters of thunderstorms will be fighting lingering layers of dry, Saharan dust and other pockets of dry air as they trek to the west.
- Factors are forecasted to weaken the systems as they merge and cross the Atlantic.
- Some forecast models indicate the storm may have enough moisture to survive reaching into the Caribbean, where it may find better atmospheric conditions to rejuvenate.
- The longer-range forecasts indicate a turn to more favorable tropical development conditions forming in the Atlantic, especially as we get into mid-August.
- NOAA's Climate Prediction Center's three-week tropical outlook has now highlighted an area in the center of the Main Development Region as having low potential for tropical development.



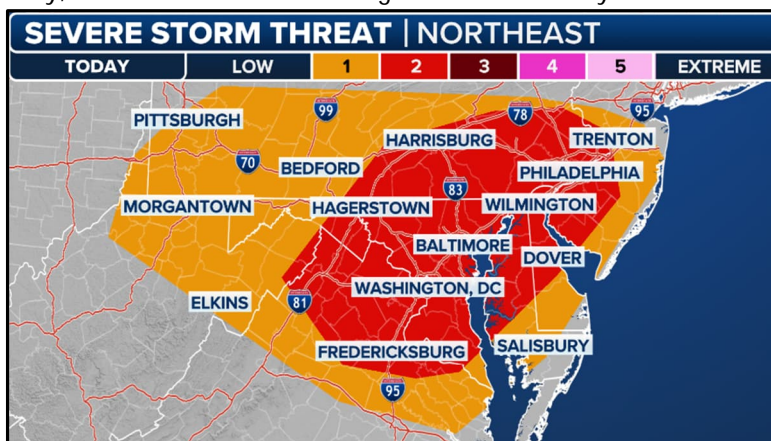
DAILY DART

WSP USA INSPECTION SERVICES DISASTER AWARENESS REPORT

July 31, 2025

Severe Weather Outlook Northeast U.S.

- Millions of people in the Northeast and Mid-Atlantic are bracing for rounds of severe weather and flooding.
- Threats of flash flooding are expected to increase during the day as storms develop during the afternoon hours.
- Torrential rain will be concentrated along a strong, but slow-moving, cold front, with additional enhancement from an area of low pressure developing along the front.
- The FOX Forecast Center said the most intense storms could bring several inches of rain in a short period of time.
- Rain amounts of 2-4 inches are likely in many areas, with locally higher amounts of 5-8 inches possible.
- Flood Watches are in effect from Virginia to Connecticut, including cities like Washington, Philadelphia and New York City.
- Computer forecast models show from Washington to Philadelphia to New York City, including much of eastern Pennsylvania and New Jersey, as the area where flooding will be most likely to occur.
- Severe weather is also possible across portions of the Mid-Atlantic and Northeast.
- NOAA's Storm Prediction Center placed portions of Pennsylvania, New Jersey, Delaware, Maryland, Washington and Virginia in a Level 2 risk on its 5-point severe thunderstorm risk scale.
- Main threat from storms that develop will be damaging wind gusts higher than 60 mph, as well as some large hail.



DAILY DART

WSP USA INSPECTION SERVICES DISASTER AWARENESS REPORT

July 31, 2025

Pending Individual Assistance Declaration Request

State	Event	Date Submitted	Approved/Denied/ Pending	Number of Counties/Tribes
	N/A			

WSP USA Inspection Services Active Disasters

Disaster Number and State	Disaster Type	Number of Counties Declared	Days Since Launch	Registration Deadline
4877 MO	Severe Storms, Straight-line Winds, Tornadoes and Flooding	2 Counties/1 City	49	8/11/2025
4879 TX	Severe Storms, Straight-line Winds, and Flooding	10 Counties	20	9/04/2025

WSP USA INSPECTION SERVICES ACTIVITY

