

DAILY DART

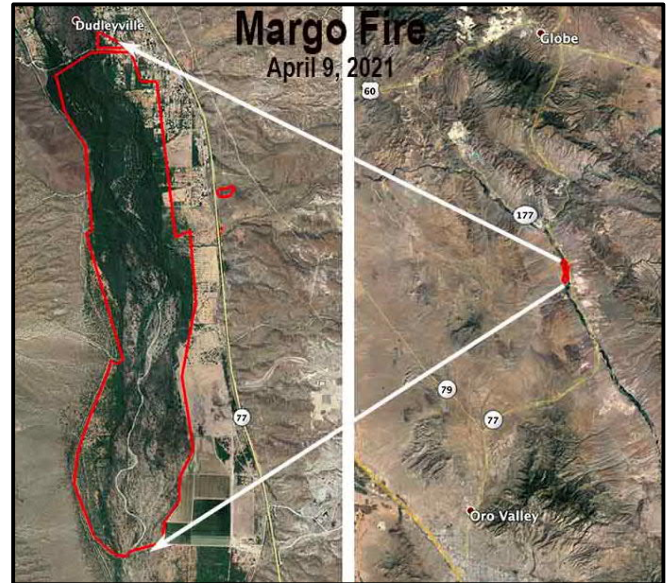
WSP USA INSPECTION SERVICES DISASTER AWARENESS REPORT

April 12, 2021

Wildfire Activity

Arizona

- The Margo fire started Thursday and has burned through over 1,100 acres and is currently 80 percent contained.
- The Pinal County Sheriff's Department has announced that Dudleyville is now in the "Set" zone.
- Residents are now cleared to return to their homes but are urged not to enter burn areas as firefighters continue to monitor hotspots.
- The wildfire that forced about 200 people to evacuate from their homes in Pinal County was determined to be human caused, according to new information released by Arizona Department of Forestry and Fire Management Friday afternoon.
- The fire destroyed 12 residences and 5 outbuildings.



Severe Weather Activity

- A cluster of severe storms swept across the South over the weekend, leaving at least three dead, damaging buildings and leaving thousands without power.
- Towering storms erupted in portions of eastern Oklahoma, western Arkansas and northeastern Texas Friday afternoon and evening.
- These storms were able to produce fierce, damaging wind gusts and widespread hail. In Texas, hailstones up to 3.0 inches in diameter plummeted to earth. Over 200 reports of hail poured in from across the South Friday and Friday night.
- Winds of up to 65 mph were reported in the southern portion of Arkansas, and nearly 32,000 customers experienced power outages as the storms kicked off, according to PowerOutage.US.
- Flooding rainfall also became a large issue rather quickly across parts of the South that had already been inundated with rounds of drenching rain since early last month.
- At one-point early Saturday morning, nearly half a million people were under flash flood warnings across the southern tier of Mississippi.
- Across southern Mississippi, widespread reports of 1.75 to 3.25 inches of rainfall were recorded in just a six-hour period from late Friday evening into early Saturday morning.
- Tornadoes have been confirmed in Arkansas, Louisiana, Mississippi, Florida, South Carolina and North Carolina.
- As of Sunday night, more than 20,000 people were without power in Florida, according to poweroutage.us, and there was severe damage in Arkansas, Florida, Louisiana and Mississippi.

DAILY DART

WSP USA INSPECTION SERVICES DISASTER AWARENESS REPORT

April 12, 2021

Tornado Activity Michigan

- A brief tornado damaged a handful of homes and vehicles Saturday in south Kent County, according to the National Weather Service.
- The “very small, brief and weak” EF-0 tornado started at 4:18 p.m. Saturday, April 10, and ended a minute later, per a National Weather Service public information statement.
- The twister touched down in the Preservation Lakes subdivision east of Byron Center and south of Cutlerville in Gaines Township and traveled about a half mile, the statement reads.
- Estimated peak speeds of 70 to 80 mph were reached in the tornado with a path width of 65 yards.
- The winds damaged six to 12 homes, most notably tearing a small portion of one’s roof off.



Pending Individual Assistance Declaration Request

State	Event	Date Submitted	Approved/Denied /Pending	Number of Counties/Tribes
KY	Severe Flooding Feb 26 & continuing	4/6/2021	Pending	9 Counties

Joint Preliminary Damage Assessments

State	Event	Number of Counties for IA		Start-End
		Requested	Completed	
AL	Severe Storms & Tornadoes March 25-26	8	8	4/8-4/10
WV	Flooding Event Feb 27-March 4	4	0	4/14-TBD

DAILY DART

WSP USA INSPECTION SERVICES DISASTER AWARENESS REPORT

April 12, 2021

WSP USA Inspection Services Active Disasters

Disaster Number and State	Disaster Type	Number of Counties Declared	Days Since Launch	Registration Deadline
4586 TX	Severe Ice Storm	126 Counties	49	4/20/2021

WSP USA INSPECTION SERVICES ACTIVITY

